

# Welcome to South Twin Lake

Enjoy, but leave no trace.



## **Camp Sites**

1. On the highest knoll at the north tip of the lake

2. At the south end of the lake. Available by

canoe or boat from the boat access, or by hiking around on the old logging road that heads south from the top of the big hill on the road in from the N011h Twin

Tents must be at least 50 feet from the water.

## **Picnicking Area**

3. On the knoll adjacent to the boat access. No camping

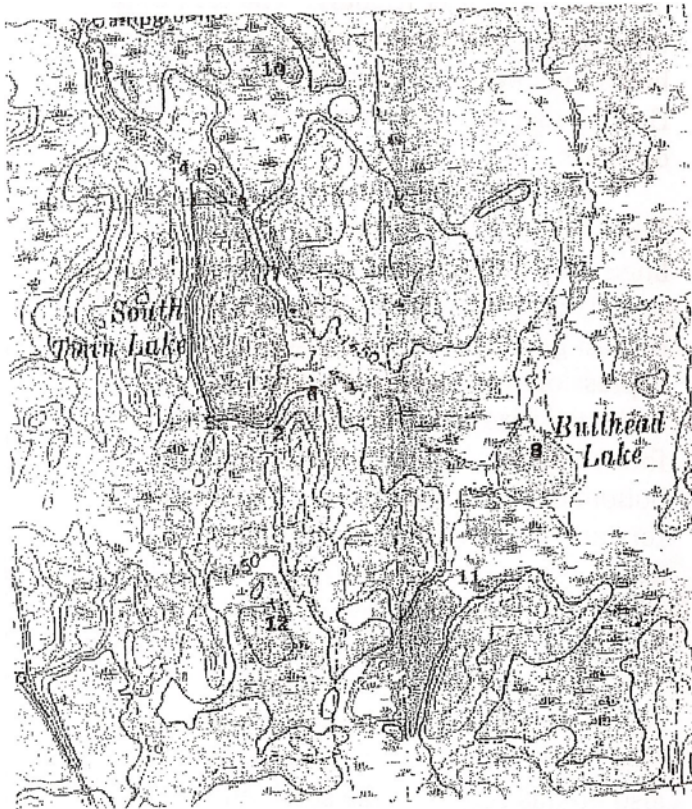
## **Listening points**

4. On the edge of the State Research Natural Area. A small sign, "Deer Trail," on the road in marks the beginning of a deer trail leading to an Aida Leopold bench on which to sit and listen or meditate, or both.

5. Keyhole Lake, located 200 yards from the SW corner of the Lake. A small sign, "Keyhole Lake," on the logging road, indicates the beginning of a trail to an Aida Leopold bench

# Map of South Twin Lake

Features denoted by corresponding numbers



(1 Mile)

Approx. Scale: 2.5" = 1 Mile

6. Owl's Roost in a hardwood forest. A sign "Deer Trail," located at the east side of the open area at the south end of the Lake locates the beginning of a deer trail leading to a bench at Owl's Roost. It can also be reached by a trail leading south from the outlet.

7. East point. An Aldo Leopold bench that can be reached by following the east shore southward.

8. Bullhead Lake. On the road south from the parking lot, and 100 yards beyond the gate, a sign "Bullhead Lake" marks the beginning of the trail with an Aldo Leopold bench at the end. This Lake is "Beaver Lake" to the locals, since it was the center of a large beaver colony in years past. Beaver cut channels through the surrounding bog to higher land where aspen grows. The channels are mostly overgrown, but still evident. Beaver are still active. Otter and loons also use this Lake.

### **Points of Interest**

9. A glacial esker -- the ridge on which the road comes in from the N 011h Twin.

10. A State Research Natural Area with 3 small bog lakes. It is the largest of the three such bogs in the Medford District of the Nicolet/Chequamegon National Forest. It hosts 55 species of vascular plants, including a number of orchids.

## Hikes

11. Beaver Dam. From the SE corner of the old logging road around the lake, take the old road south, then take a left at the Y. A beaver dam was originally in place here, but a State agency decided to improve on it, bulldozing tons of material over the original dam. The west end washed out. The beaver repaired it. Recently, whatever agency was involved in this project decided to drain most of this flowage.

12. Blueberry Lake. On the hike to Beaver Dam, at the Y where you take a left, instead take a right on the old logging road. After about a half mile, take the first left. After approximately another half mile, a sign "Blueberry Lake" will mark the trail. The road can be followed out to Forest Road 566.

## General Information

The area between the road around the lake and the lake is user friendly. The area from the road around the lake and expanding about half a mile beyond is much less friendly. Beyond that, you are on your own. Carry a compass.

The lake itself undoubtedly was formed by a huge chunk of ice forced into the sand, gravel, and rock debris at the forward edge of the last glacier. The ice melted leaving the depression that formed the lake. The esker under the road that leads to the lake was formed by glacial debris that fell to the bottom of a river that flowed within the forward edge of the glacier. The ridge of debris was left behind as the glacier melted. This last glacier of 10,000 years ago pushed some 5 miles farther south. Fuzzy's Place on Country Trunk E is located on the very southern edge of its terminal moraine. The High View Inn, a few hundred yards west, is also on this edge. To the south, the topography changes abruptly.

South Twin Lake Conservation Society P.O. Box 203, Medford, WI 54451

*Our mission statement:* To preserve South Twin Lake, its watershed and ecosystem, as a living example of life in balance ... to foster respect for and appreciation of the community of all things.

*Our core values:* community of all life ... clarity ... respect.